



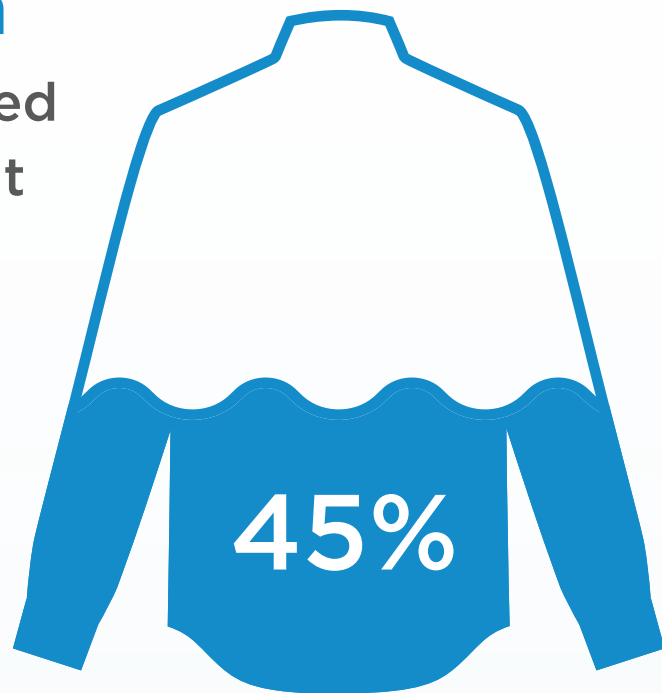
# SUSTAINABILITY REPORT 2022

## Planet



### Water Consumption

Since 2010, we have reduced water consumption per unit of production by **45%**.



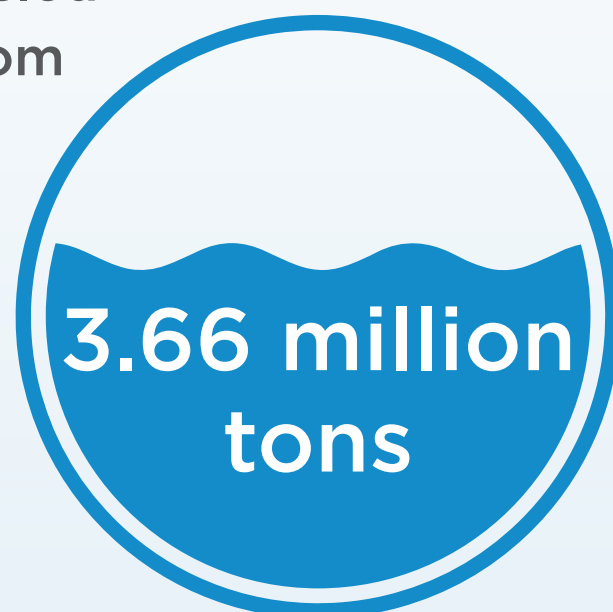
### Wastewater Discharge (COD)\*

We responsibly treat our wastewater before discharge. In 2022, our average COD was **42 mg/L** — almost 50% below the government-accepted threshold.



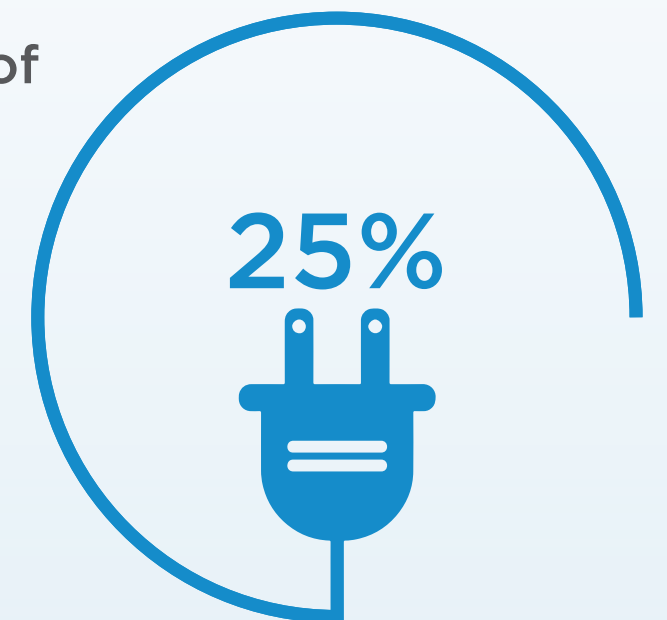
### Water Reuse and Recycle\*

In 2022, we reused and recycled **3.66 million tons** of water from our operations.



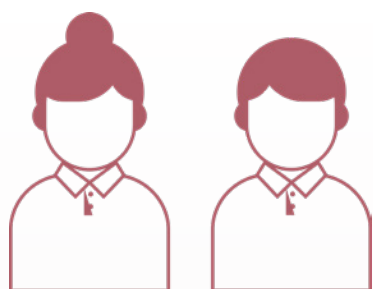
### Energy Consumption

Since 2010, we have reduced energy consumption per unit of production by **25%**.



\*This data covers our operations in Gaming, Foshan

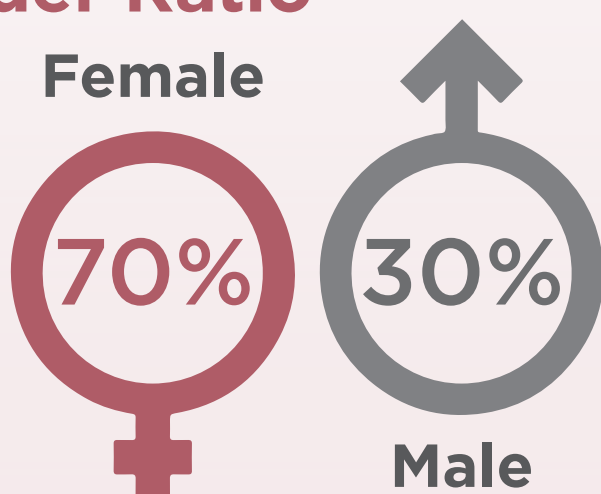
## People



### Employees

Esquel has provided quality employment for over **34,000** people globally in 2022.

### Gender Ratio



### People Investment

In 2022, Esquel invested over **US \$14 million**.



### Learning Hours

Our employees have spent **301,203** hours learning through both online and offline channels in 2022.

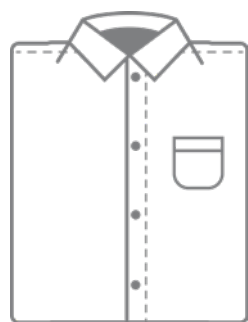


### Incident Rate

**0.13** reportable incidents per 200,000 working hours of all employees within our sites in 2022.



## Product



### Patents

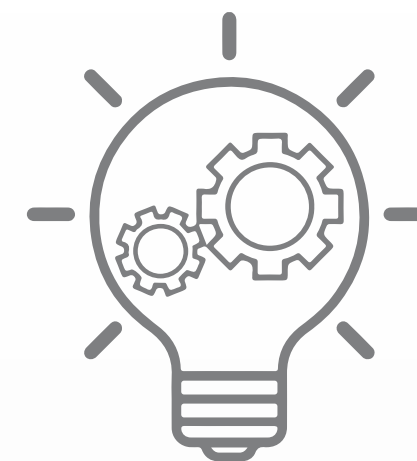
As of 2022, we hold  
**1,974** active patents.



### R&D Spendings

Esquel spent

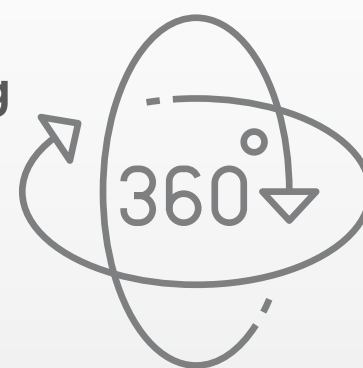
**US\$ 26.3 million**  
on research and development  
in 2022.



### Virtual Creation

Building our virtual sampling skills and leveraging market technology, we have been able to reduce our carbon footprint from sampling while communicating with our clients more efficiently.

In 2022, we built **8,575** virtual samples in collaboration with our clients.



## Community



### Vision Screening Program

Since 2012,

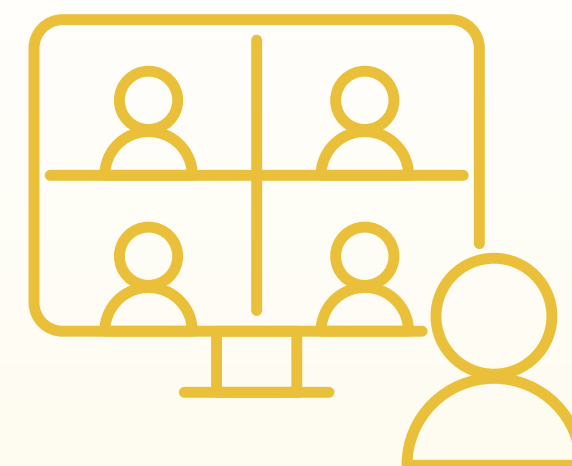
**21,757** children  
received free eye examination  
and treatment.



### Summer Learning Camp

Since 2007, we have engaged

**9,305** students  
in our learning camps.



### Hongzhi Students Program

Since 2007,

**1,911** scholarships have  
been awarded to students.



To know more  
about sustainability  
at Esquel:

